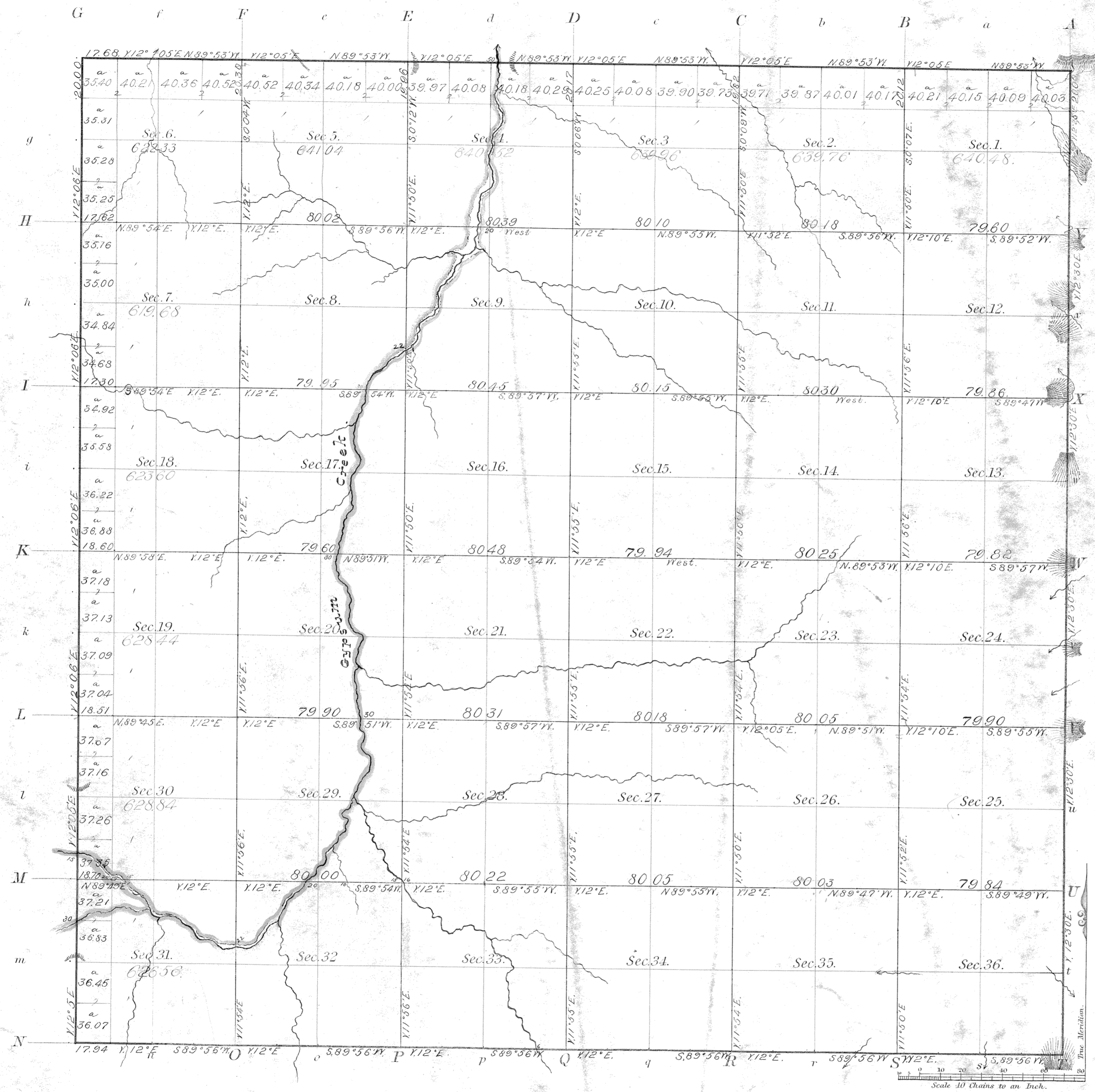


TOWNSHIP N<sup>o</sup>. 17 SOUTH RANGE N<sup>o</sup>. 1 WEST OF THE 6<sup>TH</sup> PRINCIPAL MERIDIAN KAN.



Meanders of								
Posts	Courses	Ch. Lk.	Posts	Courses	Ch. Lk.	Posts	Courses	Ch. Lk.

Total number of Acres. 22 951 21					
Surveys Designated	By Whom Surveyed	Date of Contract	Amount of Surveys	When Surveyed	
Township lines	Divania Furrer	August 18 <sup>th</sup> 1864	M. Ch. Lk.	October 19 <sup>th</sup> 1864	
Subdivisions	Elsha Diependorf	July 28 <sup>th</sup> 1864	59 - 72 - 67	Oct. 24 <sup>th</sup> - 29 <sup>th</sup> 1864	
6 <sup>th</sup> Prin. Merid.	Joseph Lealvie	March 28 <sup>th</sup> 1856		August 1856	

The above Map of Township N<sup>o</sup>. 17 South of Range N<sup>o</sup>. 1 West of the 6<sup>th</sup> Principal Meridian Kansas is strictly conformable to the field notes of the survey thereof on file in this Office, which have been examined and approved.

Surveyor General's Office,  
Lawrence, Kan., Feb. 21<sup>st</sup> 1865

Daniel W. Hilden  
Sur. Gen.